

CROATIA



CROATIA SEASON 2025

Ample Space For

A vessel that not only bears the name of its enchanting destination but embodies the very spirit of the Adriatic waters it gracefully navigates. With her beautiful teak deck, mahogany hull, and abundant deck space she is the perfect vessel for your unforgettable experience.

Up to 14 Guests



**Unwind &
Recharge**



DESTINATION

Croatia

43.8707° N

15.2324° E

Croatia is one of the most popular yachting destinations with many beautiful regions, historic towns, islands, and small villages.

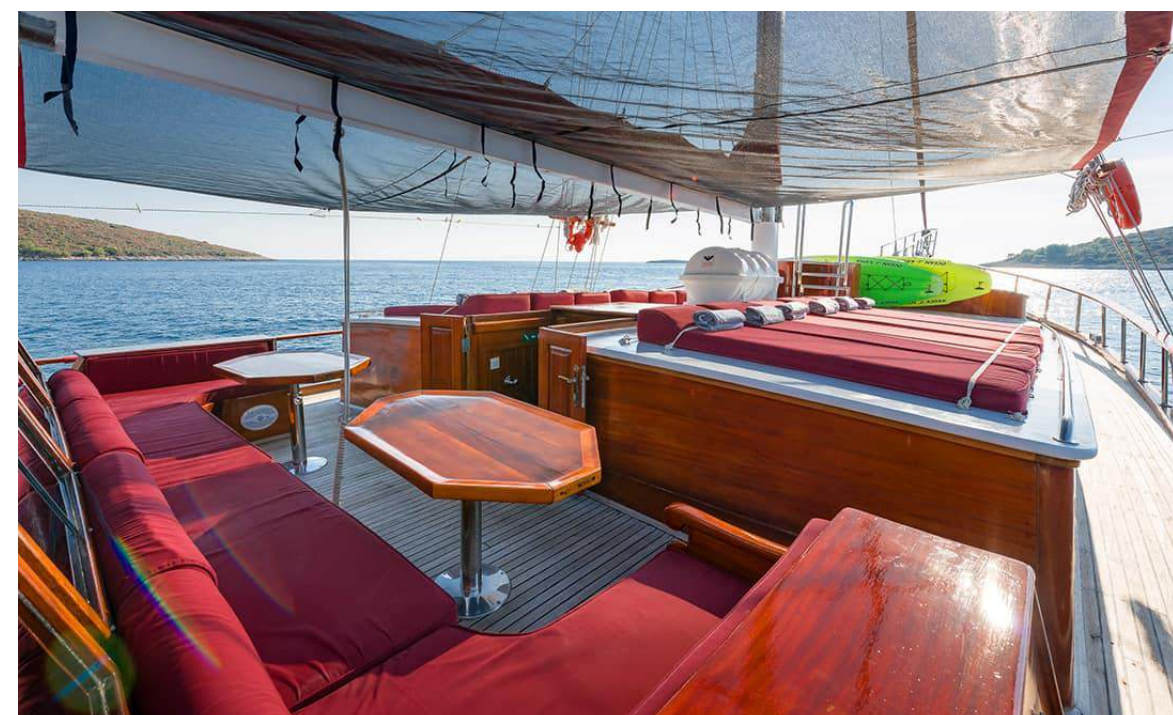
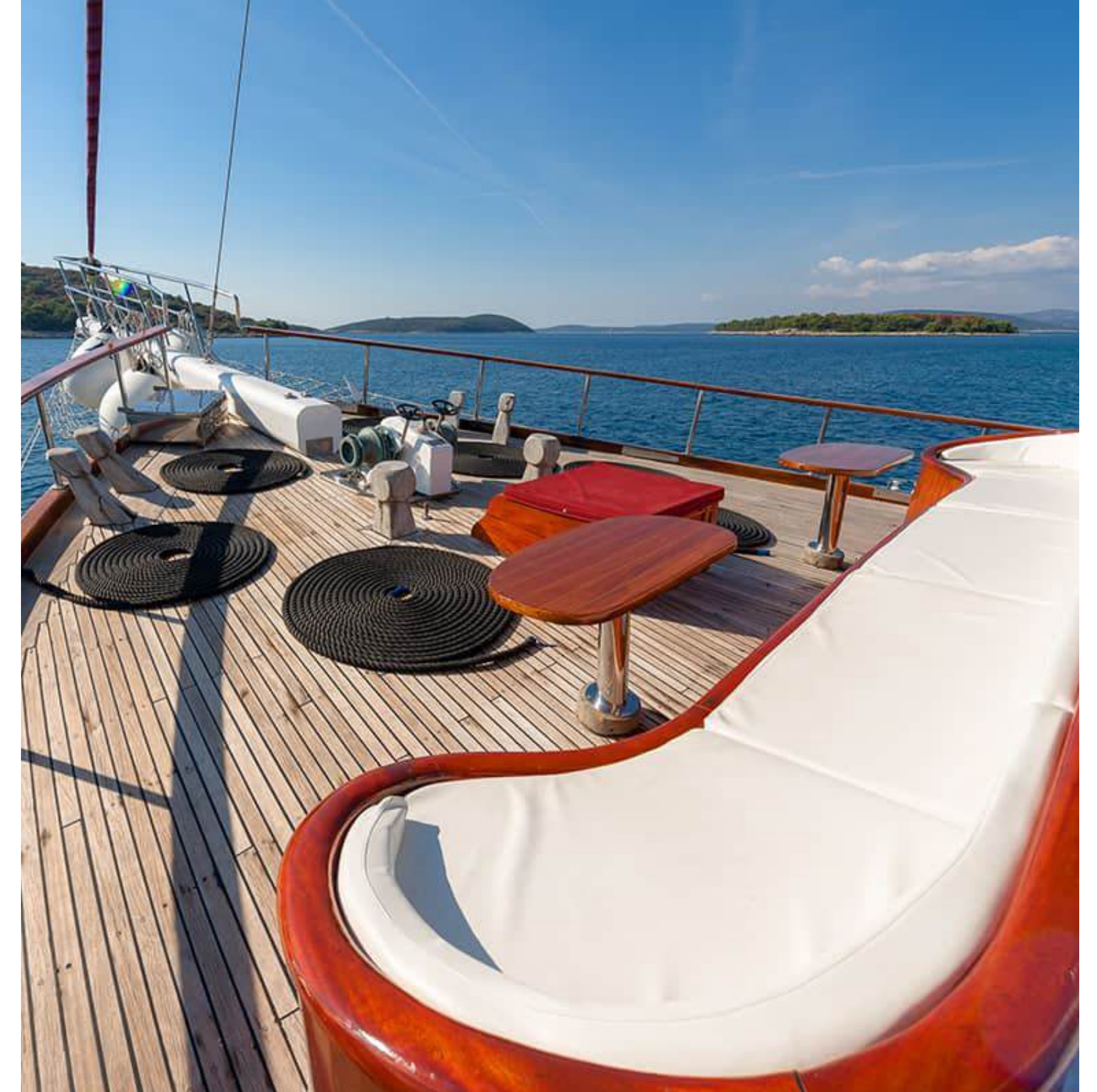
Lots of Deck Space

Abundant deck space is a hallmark of 'Croatia', providing guests with countless distinct areas to revel in dining, relaxation, and entertainment.

Al fresco dining area on the aft deck, a delightful snack and cocktail space on deck amidships and an intimate foredeck nook for a nightcap under the stars.

There are sunbeds for everyone, and the stern lounging beds are a perfect shaded spot for some peaceful reading.

Did we mention the jacuzzi?



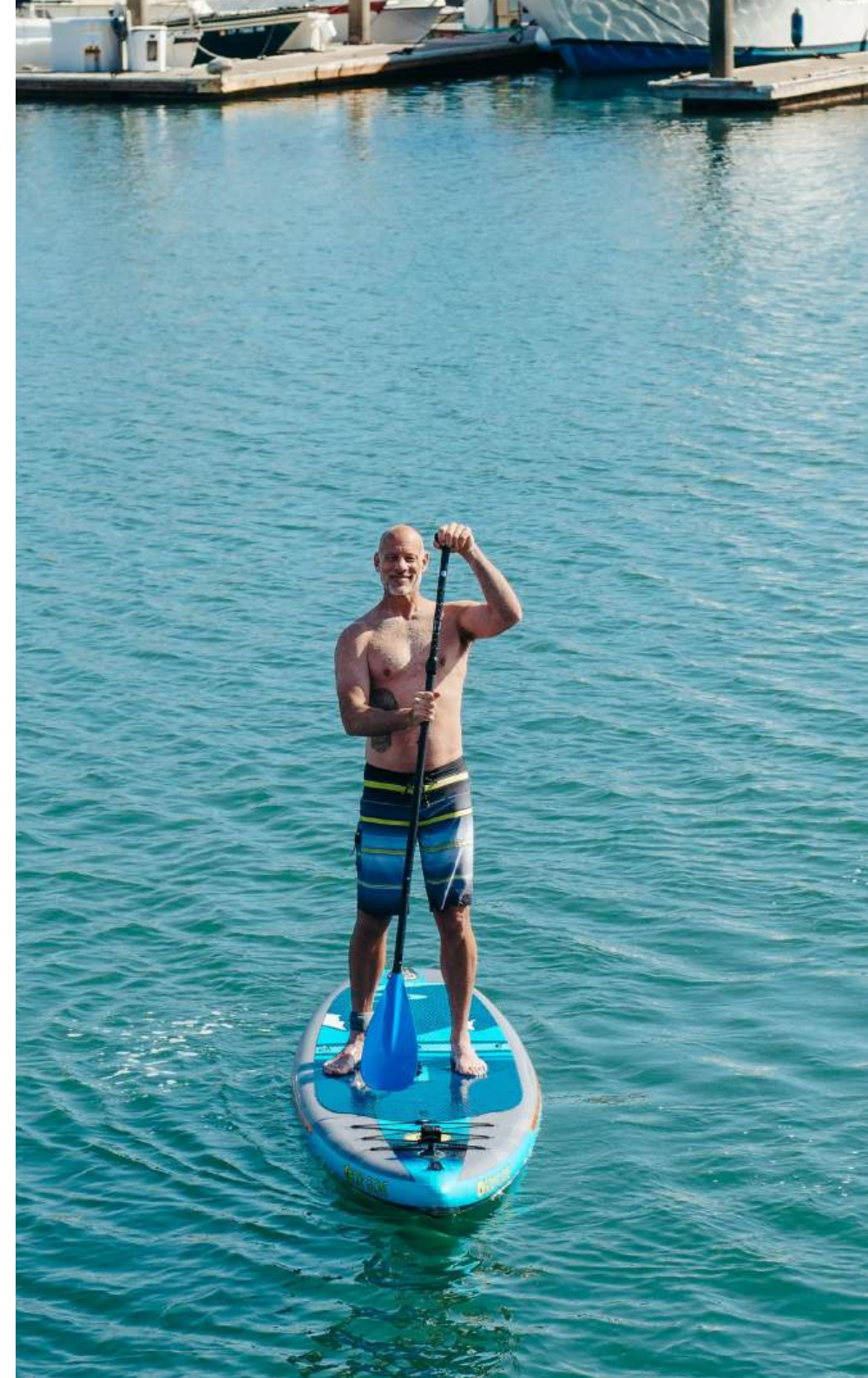
Beautiful and Spacious Interior

The salon offers plenty of space for indoor fun and relaxation in bad weather. Adorned in traditional deep gloss varnished timber, the cabins on this traditional wooden vessel exude warmth, offering guests a cozy and timeless retreat.



Feeling Energetic?

Water Sports include Jet ski, Water skiing, Tube ride and 2 Paddleboards, so you'll find plenty of opportunities to exercise in the quiet Croatian bays known only to your crew, away from the madding crowds.



Specifications

Length

32 m
(105')

Beam

7.2 m
(23' 7")

Draft

2.9 m
(9' 6")

Cruise speed

9 knots

Cabins / Guests

7 14

Built / Renovated

1998/2017

Water Sports

Jet ski, Water skiing,
Tube ride, 2 Paddleboards

Crew Description

5 crew members
(Captain, Chef, 2 Stewards, Deckhand)

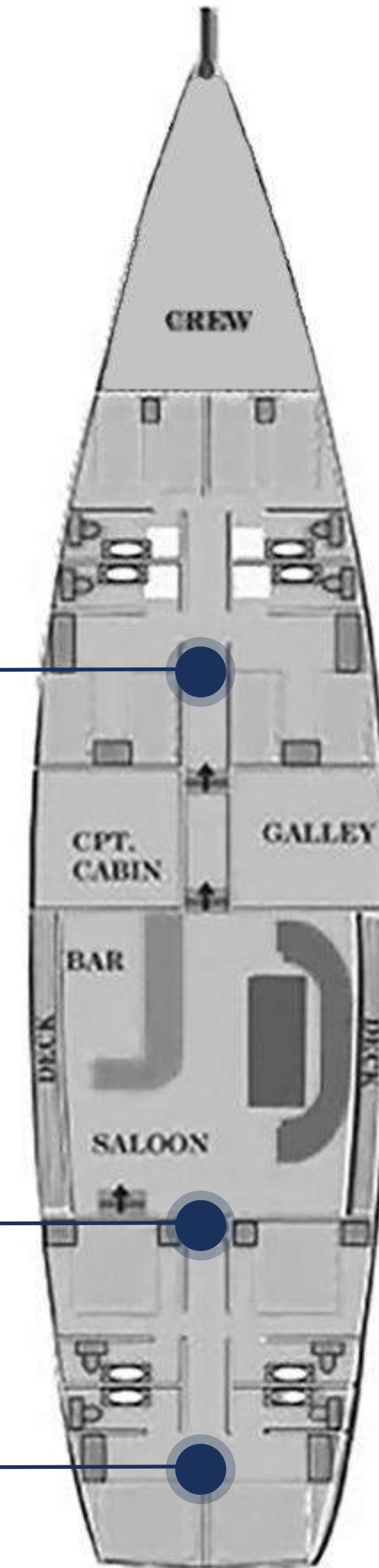


Cabin Description

- 3 Twin cabins (5.70 - 5.90 m²) with 2 single beds. Private bathroom (2.20 - 2.90 m²) with shower box and electrical toilet

- 2 Double cabins (5.80 m²) with a double bed (160 x 200 cm). Private bathroom (2.50 m²) with shower box and electrical toilet

- 2 Double cabins (7 m²) with a double bed (160 x 200 cm). Private bathroom (5 m²) with shower box and electrical toilet

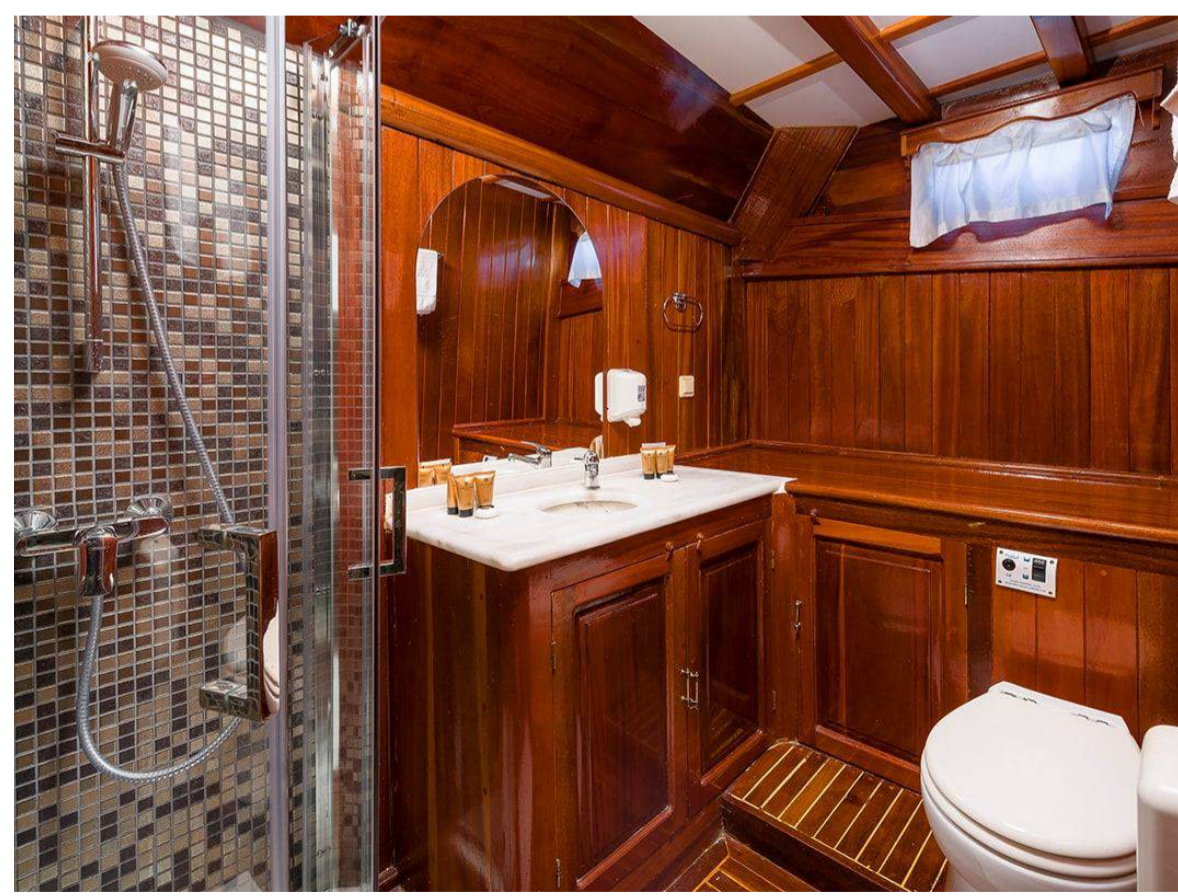


Cabin Details



TWIN CABIN

DOUBLE CABIN





Timelessness & Luxury

PRICES

SEASON A

From 03 May 2025
till 17 May 2025

€17,500

(VAT included)

SEASON B

From 17 May 2025
till 07 June 2025

€21,000

(VAT included)

SEASON C

From 07 June 2025
till 14 June 2025

€23,000

(VAT included)

SEASON D

From 14 June 2025
till 21 June 2025

€24,000

(VAT included)

SEASON E

From 21 June 2025
till 23 August 2025

€27,000

(VAT included)

SEASON F

From 23 August 2025
till 30 August 2025

€24,000

(VAT included)

SEASON G

From 30 August 2025
till 13 September 2025

€23,000

(VAT included)

SEASON H

From 13 September 2025
till 11 October 2025

€21,000

(VAT included)

SEASON I

From 11 October 2025
till 01 November 2025

€18,500

(VAT included)

INCLUDED

Agency Support: guidance through the booking procedure, paperwork, preparation for the cruise, food, drinks, and route organization, during the cruise support, assistance in case of emergency. Entire support before and during the cruise.

Shipboard accommodation: maximum number of 14 guests sleeping in 7 cabins.

Fuel for cruising: 4 hours/day

Crew: 5 crew members

Air conditioning: Up to 12 hours/day (if the yacht is out of port).

Linen: bed sheets, bathroom, and beach towels

Wi-Fi: unlimited

VAT

EXTRA PAYMENTS

Mandatory extras

Food Options

HALF BOARD: 560 €/person/week (breakfast, lunch)

CHILDREN DISCOUNTS: under 2 years: free of charge, under 10 years: 50% discount

EXTRA MEAL: 50 €/person (3 courses)

Drink Options

ALL-INCLUSIVE NON-ALCOHOLIC DRINKS: 190 €/person/week (tea, coffee, all kinds of 100% fresh fruit juices, carbonated juices, water, mineral water)

ALL-INCLUSIVE PREMIUM ALCOHOLIC DRINKS: 350 €/person/week (tea, coffee, fresh orange juice, all kinds of 100% fruit juices, carbonated juices, water, mineral water, Jameson, Jack Daniels, Absolut vodka, Hendricks Gin, Havana rum, Martell cognac, Don Julio tequila, Monin syrups, High-quality Croatian wines - Grk, Plavac Mali, Zinfandel, Cabernet Sauvignon, Posip, Zlatica, Sparkling wines)

CORKAGE FEE: 1,500 €/week (if you wish to bring your own drinks onboard)

Port and Tourist Taxes

Port fees, anchorages, and Tourist taxes are to be paid on spot (in cash), according to actual costs in ports/anchors. The total cost per week depends on the selected itinerary/port costs. It is not obligatory for the yacht to be in the port each night, it can also be anchored, which lowers the mooring fees (approximate cost is between 1,500 – 2,000 Euro/week). In the case of the large consumption of water or fuel during the cruise yacht should go to the port to refill.

Non-Mandatory extras

TIPS: Tips are not included in the price of the charter and are a voluntary way of showing appreciation for a good service. Usually it is 10% to 15% of the charter price, according to your satisfaction, paid to the captain at the end of the charter and distributed equally by the captain to the rest of the crew.

Private Marinas: If a client wishes to use private marinas the costs can vary from 500 and up to 900 €/night.

Additional Motorized Water Sports: Water skiing, tube rides: 100 €/hour. Jet ski: 200 €/hour. Charges based on usage.

Other Options on request: Land transfers, fishing licenses, guided tours, excursions, restaurants, bike rentals, car rentals.

Croatia